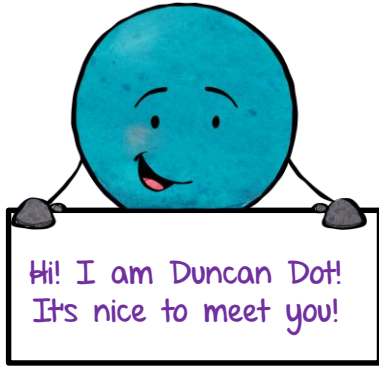


Thank you for your purchase!!

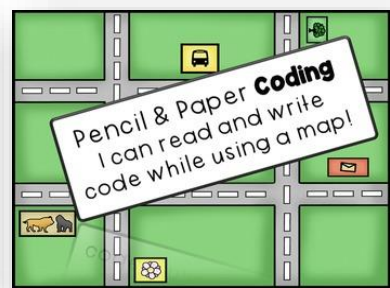
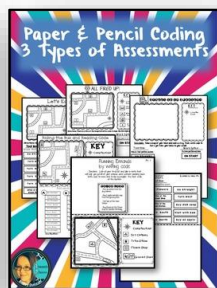
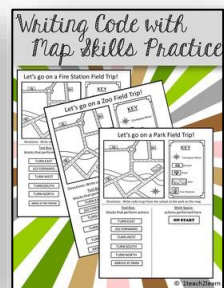


Hi there! My name is Bailey Duncan and I love creating coding resources. I am currently coding with my students at school and it is so much fun! I named this adorable Little guy created by



Duncan Dot because of my last name and also the alliteration of Duncan and Dot is fun! When you see him in my coding resources and the instructions tell you to help him through the map or path, that is who I am talking about. 😊

For more Paper & Pencil Coding Resources click the images below

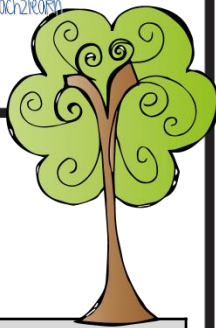


Thank you to these awesome artists for their clip art!

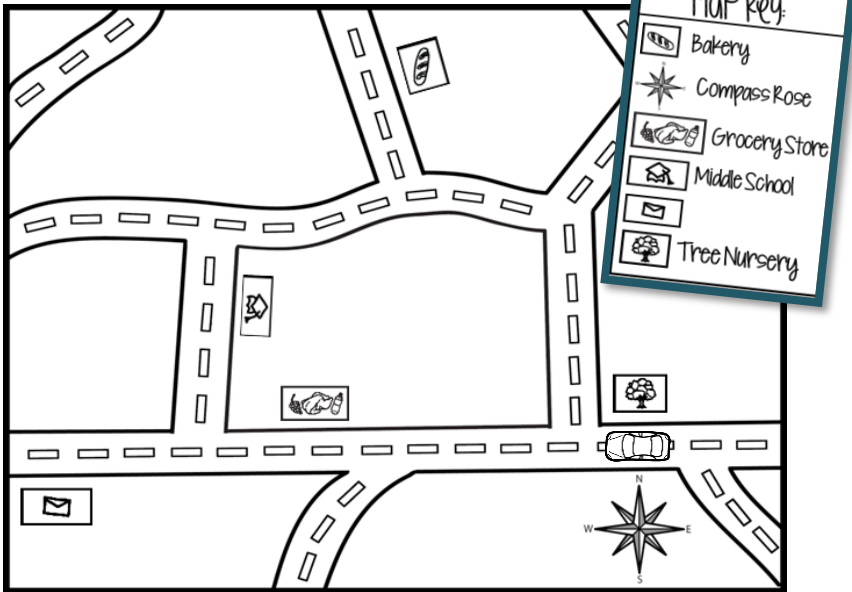


Cut and Paste Coding PLANTING TREES

©itreach2teach



The Tree Nursery is going to plant trees at the Grocery Store and at the Middle School on Earth Day! Help write code from the Tree Nursery to the Grocery store and then to the Middle School.



On start

1. The label for this symbol  is missing on the key. Can you infer or guess the name of the place? Write the name in the Map Key above. How did you figure out the answer?

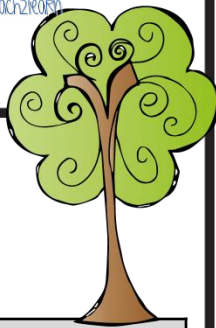
2. Why is it important to plant trees in your town or city? How do trees help the Earth?



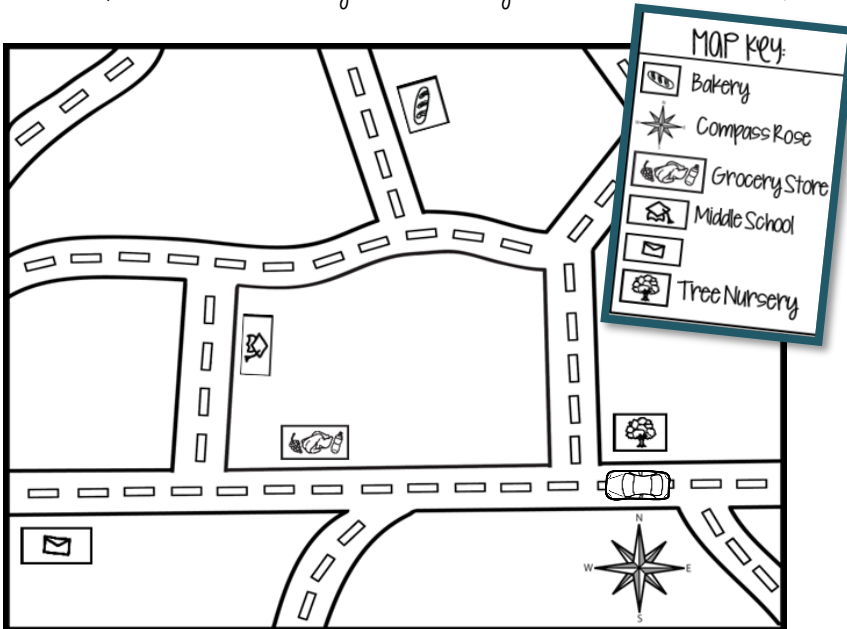
Drive straight	Plant trees at Middle School	Drive straight
Turn right	Drive straight	Plant trees at Grocery Store

Cut and Paste Coding PLANTING TREES

©iTeach2Reign



The Tree Nursery is going to plant trees at the Grocery Store and at the Middle School on Earth Day! Help write code from the Tree Nursery to the Grocery store and then to the Middle School.



- The label for this symbol  is missing on the key. Can you infer or guess the name of the place? Write the name in the Map Key above. How did you figure out the answer?

Post office because there is a letter and that is a place that sends letters and receives letter.

- Why is it important to plant trees in your town or city? How do trees help the Earth?

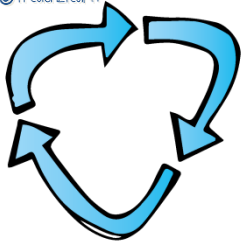
It is important to plant trees in your community because trees give shade and homes to animals. Also, trees help improve the air quality and also help make the town look beautiful.

On start
Drive straight
Plant trees at Grocery Store
Drive straight
Turn right
Drive straight
Plant trees at Middle School

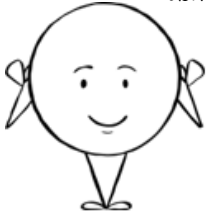


Drive straight	Plant trees at Middle School	Drive straight
Turn right	Drive straight	Plant trees at Grocery Store

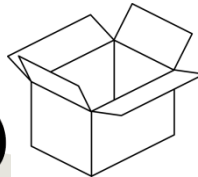
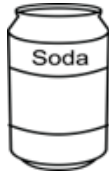
Cut and Paste Coding RECYCLING



Help Duncan Dot recycle the items and bring them to the recycling bin. Cut out the pieces at the bottom of this paper and paste them in order to write code. Remember, Duncan Dot can only walk in the direction he is facing. So don't forget to turn him!



What are some other items that we recycle? Color the recyclable items.



Why is important to recycle?

Four horizontal lines for writing an answer to the question above.

A vertical grid with 10 rows. The top row is shaded and contains the text 'On start'. The remaining 9 rows are empty for writing code.

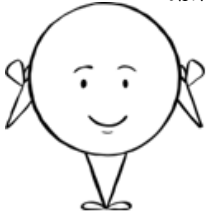


Go straight	Turn Left	Go straight	Go straight to recycle bin	Go straight
Pick up the tin can	Go straight	Pick up the newspaper	Turn Left	Go straight

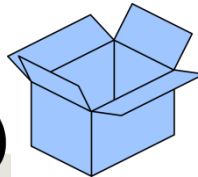
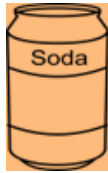
Cut and Paste Coding RECYCLING



Help Duncan Dot recycle the items and bring them to the recycling bin. Cut out the pieces at the bottom of this paper and paste them in order to write code. Remember, Duncan Dot can only walk in the direction he is facing. So, don't forget to turn him!



What are some other items that we recycle? Color the recyclable items.



Why is important to recycle?

It is important to recycle because we can reuse the items again and again, that way we do not fill up the landfills with unnecessary items.

Also, it is neat that we can re-purpose things and use them more than once, that way our natural resources last longer and we do not have to cut down as many trees to obtain paper.

On start
Go straight
Go straight
Pick up the tin can
Turn Left
Go straight
Go straight
Pick up the newspaper
Go straight
Turn Left
Go straight to recycle bin

Go straight | Turn Left | Go straight | Go straight to recycle bin | Go straight

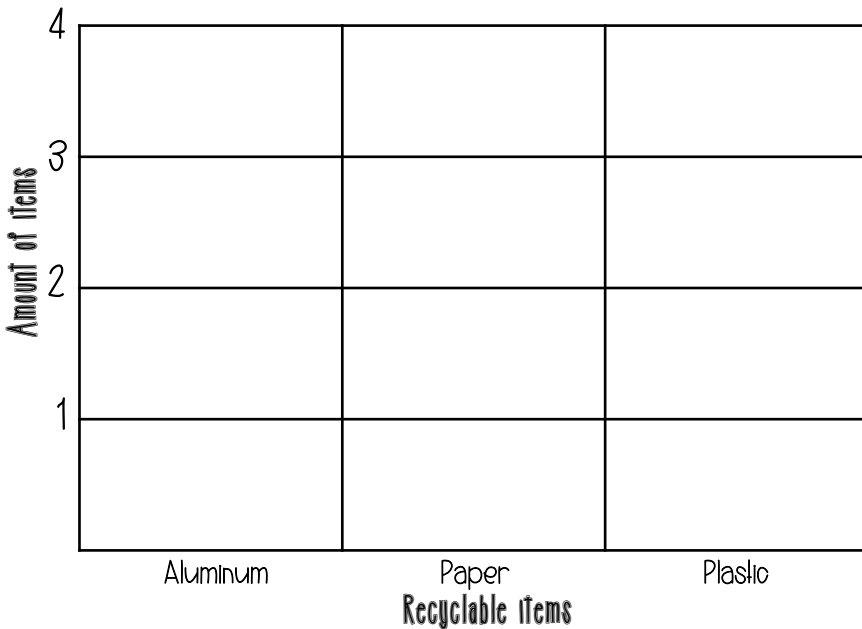
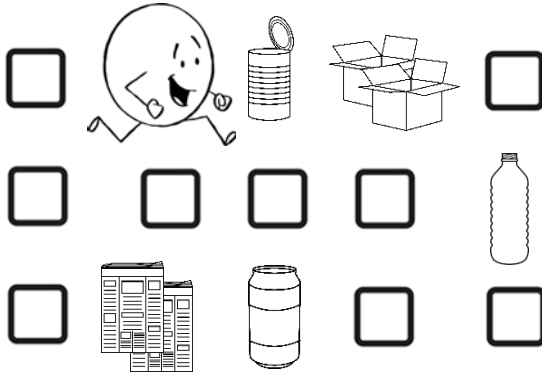
Pick up the tin can | Go straight | Pick up the newspaper | Turn Left | Go straight





Cut & Paste Coding SORTING the RECYCLING

Duncan Dot is collecting all of the recyclable items and sorting them into their categories. Help him complete the code on the left to collect the items. Then, organize the items into their categories on the graph below.
 *Cut out the 10 pieces below to complete the code and to complete the graph.



On start
Go Straight
Go Straight
Go Straight
Go Straight
Turn right
Go Straight
Go Straight

Answer the questions using the graph's data.

- How many more paper items are there than plastic items?

- Order the recyclable items categories from greatest to least.
_____, _____, _____
- How many total items did Duncan Dot collect to recycle?

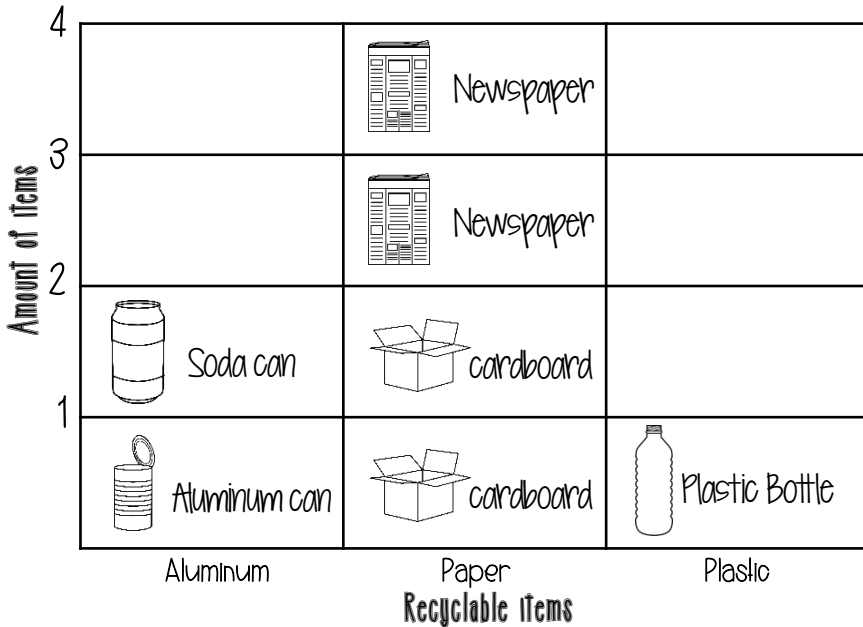
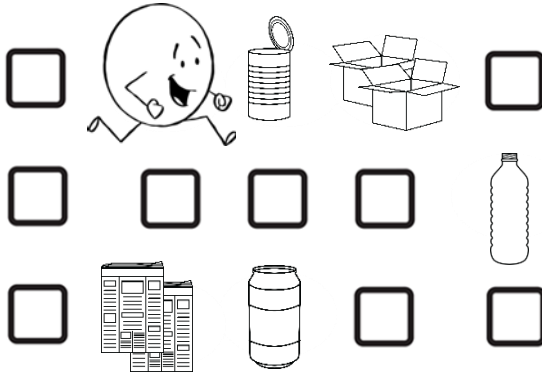


Plastic Bottle	Go Straight	Soda can	cardboard	Aluminum can
Go to end at newspapers	cardboard	Newspaper	Turn right	Newspaper



Cut & Paste Coding SORTING the RECYCLING

Duncan Dot is collecting all of the recyclable items and sorting them into their categories. Help him complete the code on the left to collect the items. Then, organize the items into their categories on the graph below.
 *Cut out the 10 pieces below to complete the code and to complete the graph.



On start
Go Straight
Go Straight
Go Straight
Turn right
Go Straight
Go Straight
Turn right
Go Straight
Go Straight
Go to end at newspapers

Answer the questions using the graph's data.

- How many more paper items are there than plastic items?
 $4 - 1 = 3$ more paper items than plastic items
- Order the recyclable items categories from greatest to least.
 paper , aluminum , plastic
- How many total items did Duncan Dot collect to recycle?
 7 items



Plastic Bottle	Go Straight	Soda can	cardboard	Aluminum can
Go to end at newspapers	cardboard	Newspaper	Turn right	Newspaper